

Archaeological Evidences to Fix Chronology in History

Durgesh Kumar Srivastava
Department of Ancient Indian History
And Archaeology
University of Lucknow, Lucknow

- **This topic comprised Chronology of Indian History, Archaeological material in different periods and use of these archaeological findings to fix date/chronology of the area**

Stone Age

*Palaeolithic Period

I. Lower Palaeolithic

II. Middle Palaeolithic

III. Upper Palaeolithic

Mesolithic Period

Neolithic Period

Stone Types For Tools

- i. Agate
- II. Chert
- III. Flint
- iv. Chalcedony
- v. Jasper
- vi. Quartz

Colours of Stones:

- i. Red
- ii. Orange
- iii. Yellow
- iv. Black
- v. Grey
- vi. Green

Lower Palaeolithic Tools

Pebble

Chopper

Chopping



Hammer Stone



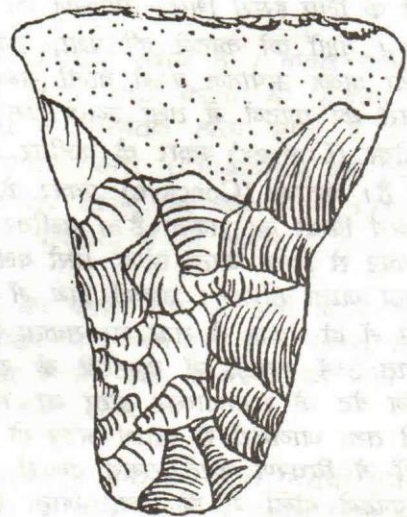
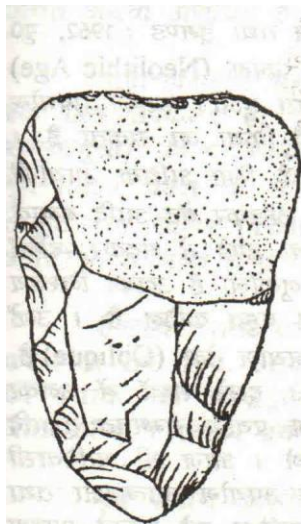
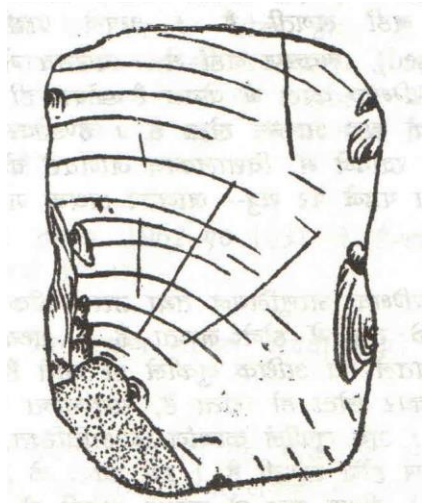
Acheulean Handaxe



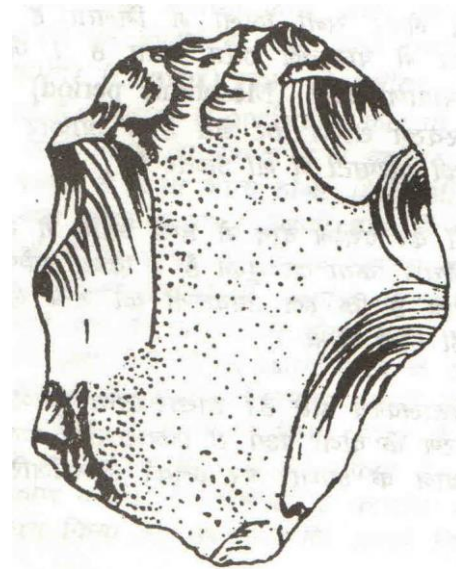
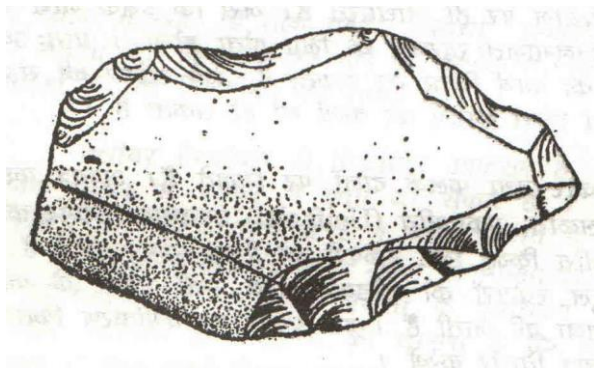
Handaxe



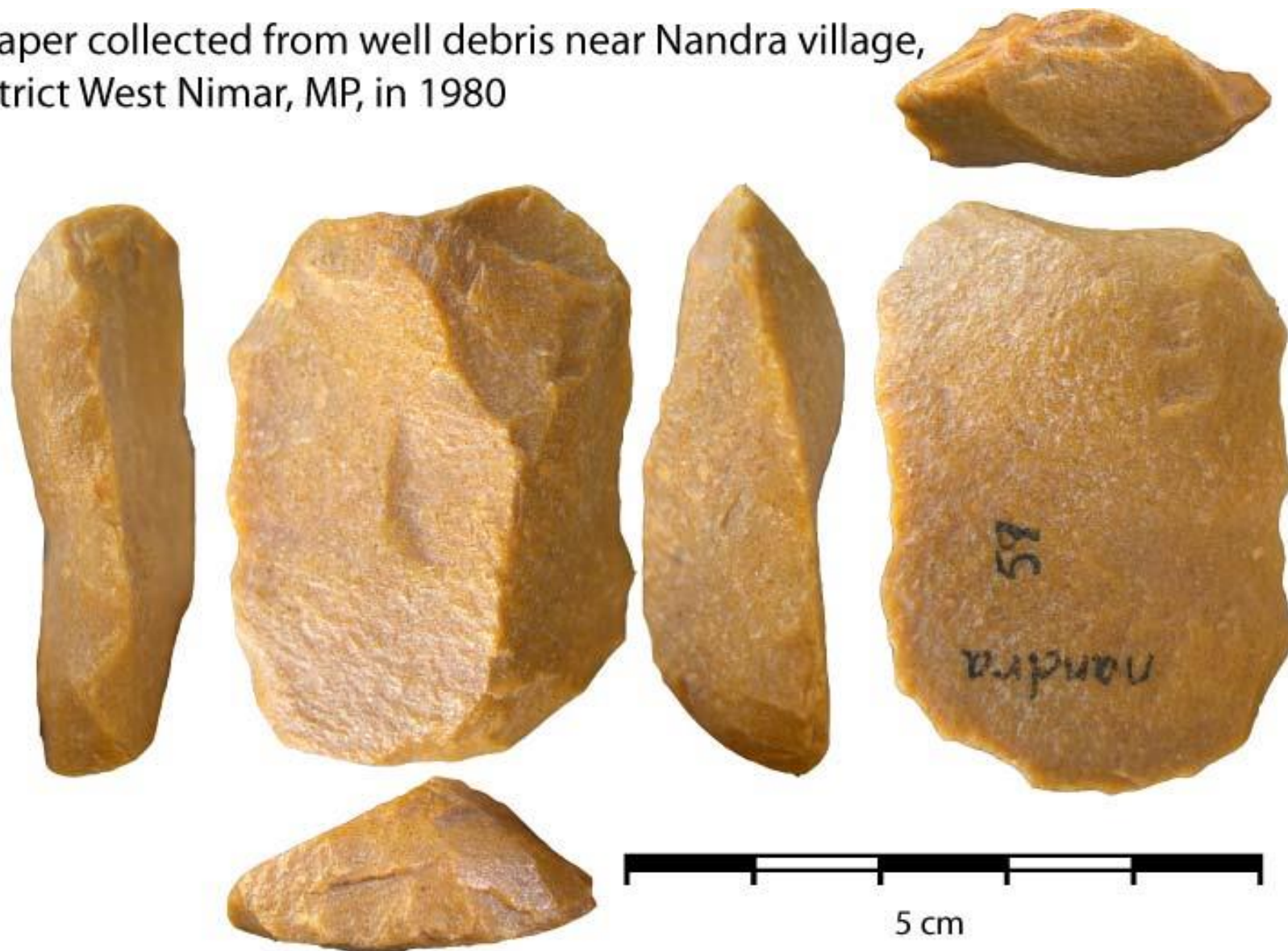
Cleaver



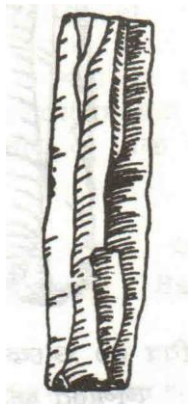
Scraper



Scraper collected from well debris near Nandra village,
District West Nimar, MP, in 1980



Middle Palaeolithic



Blade

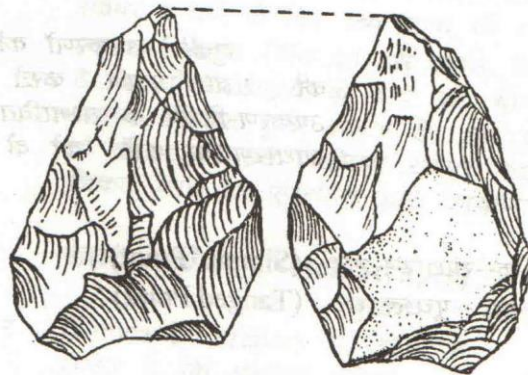


Scraper

Scraper



Point



Point



Upper Palaeolithic

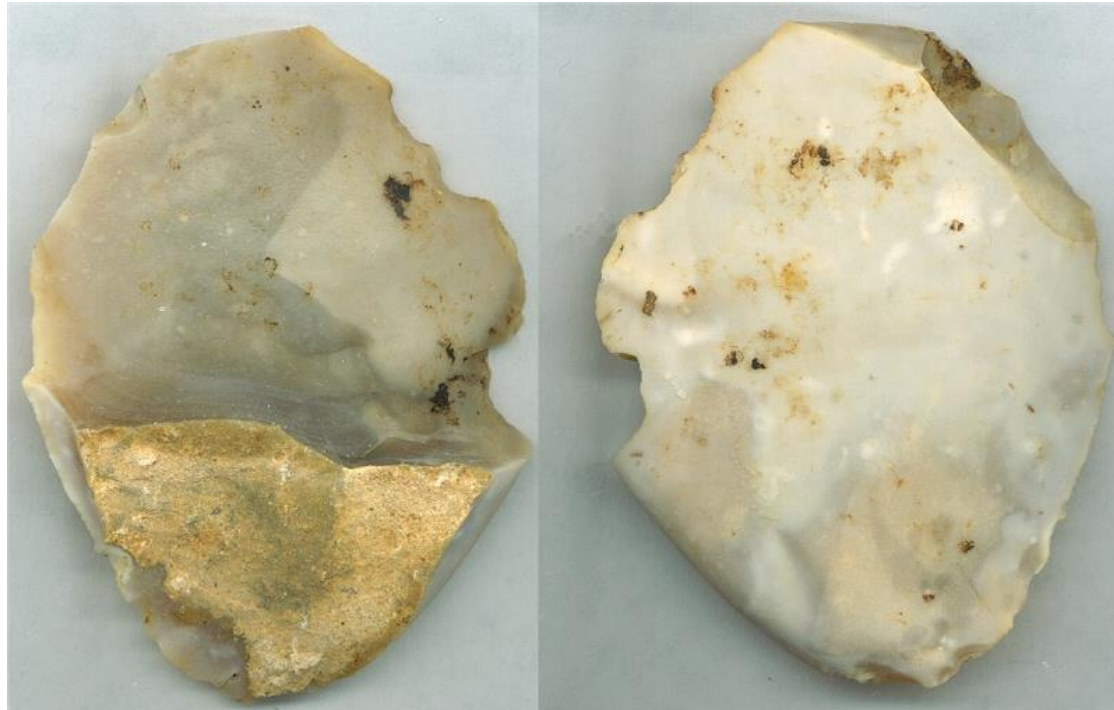
Blade



Cores, Scrapers and Blades



Flake



PALAEO LITHIC SITES IN INDIA

0 500 KM

LEGEND

- LOWER PALAEO LITHIC
- △ MIDDLE PALAEO LITHIC
- UPPER PALAEO LITHIC
- ⊙ LOWER, MIDDLE, & UPPER PALAEO LITHIC

LEGEND_____

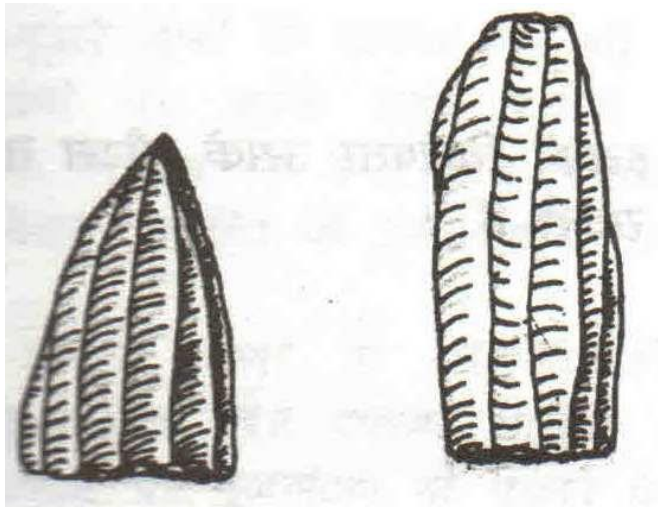
- LOWER PALAEOLITHIC
- △ MIDDLE PALAEOLITHIC
- UPPER PALAEOLITHIC
- ⊗ LOWER, MIDDLE, & UPPER PALAEOLITHIC

Mesolithic

Mesolithic tools found in Bhimbetka excavations



Core



Lunate



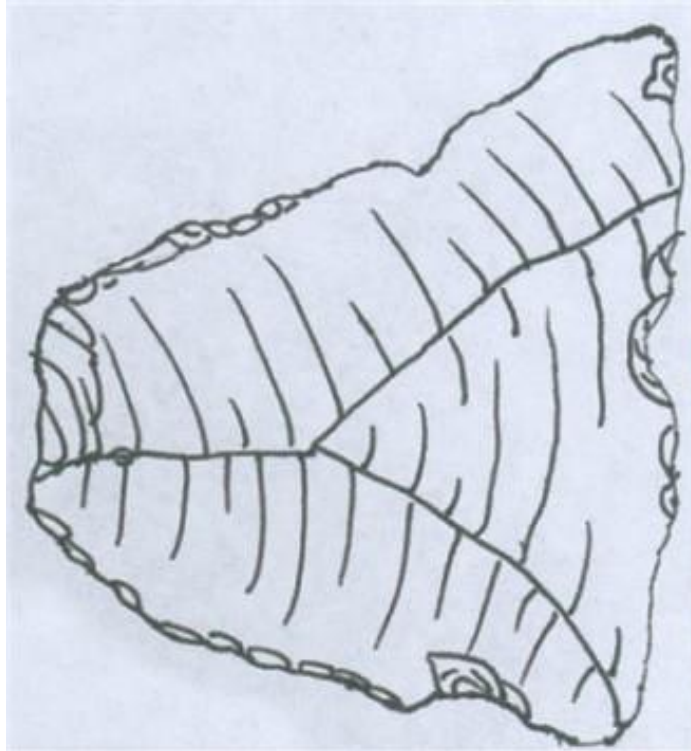
Trapezium



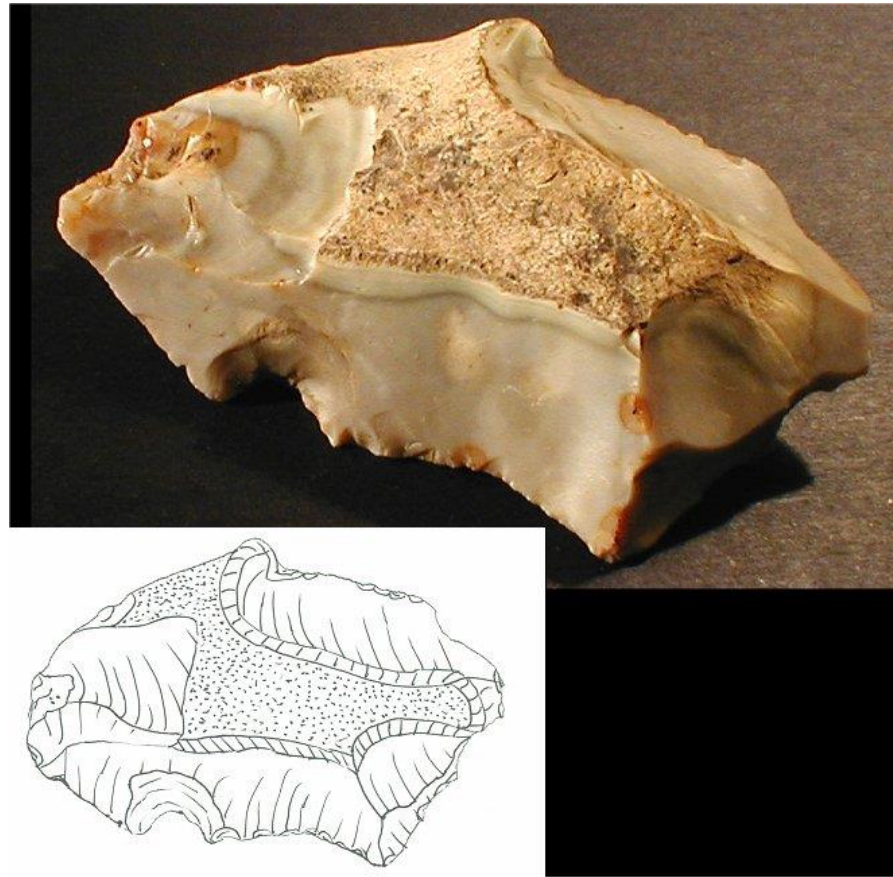
Trapezoid



Scraper



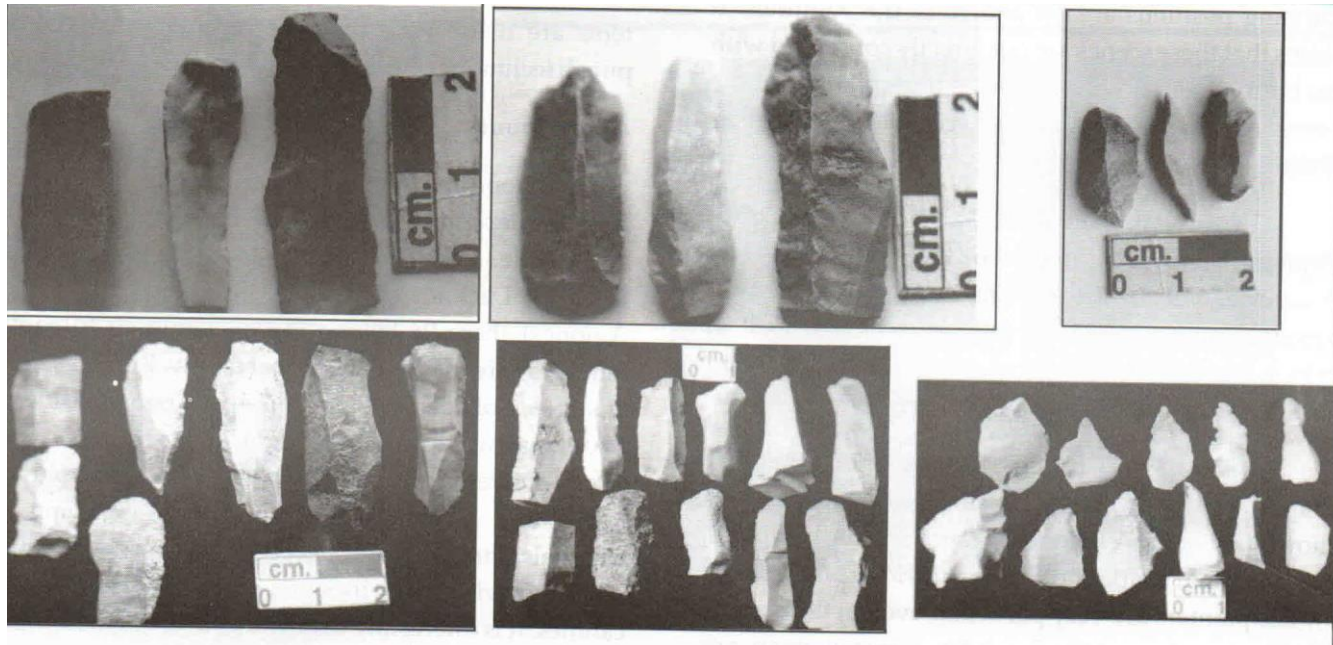
Side Scraper



Microliths



Microliths



Mesolithic Pottery

(Bagore)



Bone Bead



FIGURE 4

Neolithic

Celt and Pick



Use of Celt



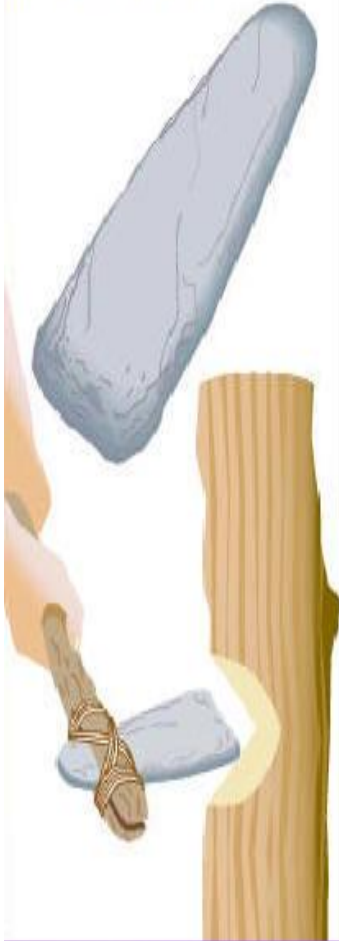
Stone Ring



Stone Ball



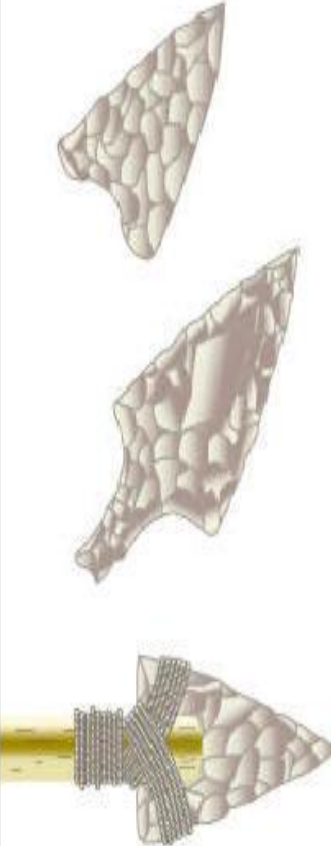
Ground-Edge Ax
(used for chopping)



Blade Knife
(used for slicing)

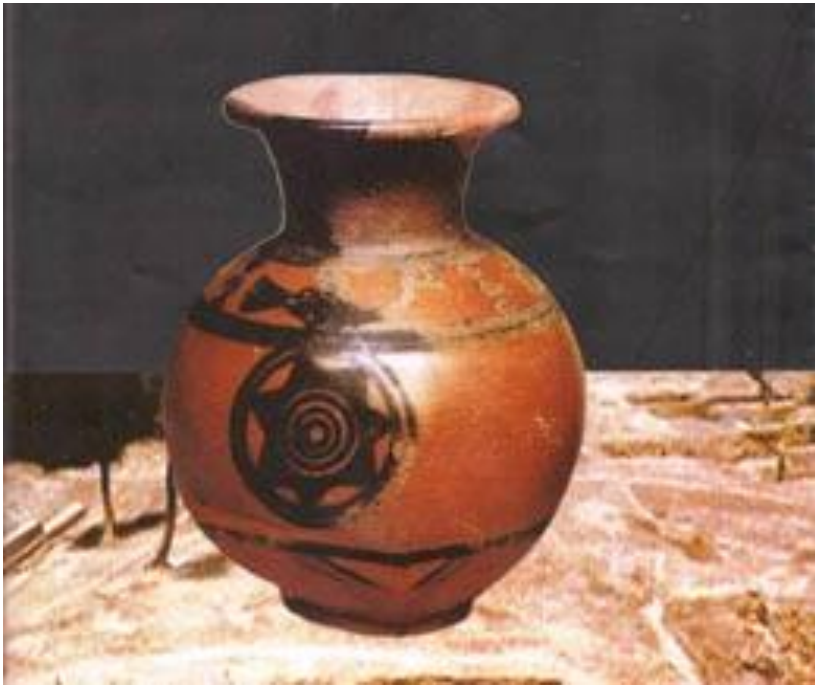


Arrowhead
(used for hunting)

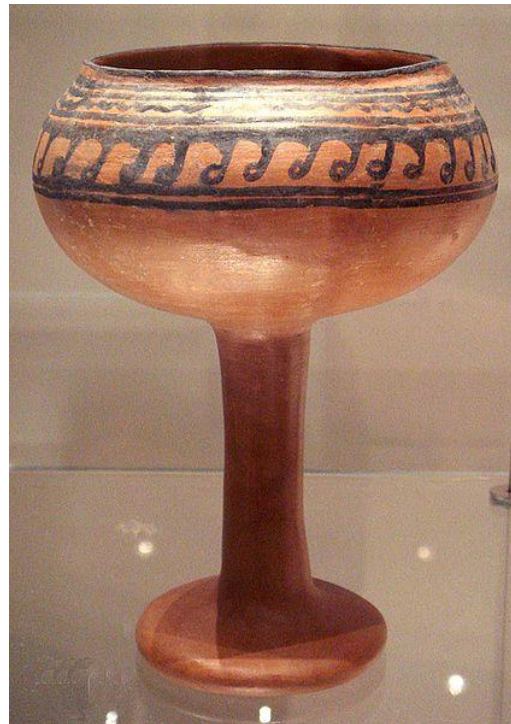


Harappan Culture





Chalcolithic



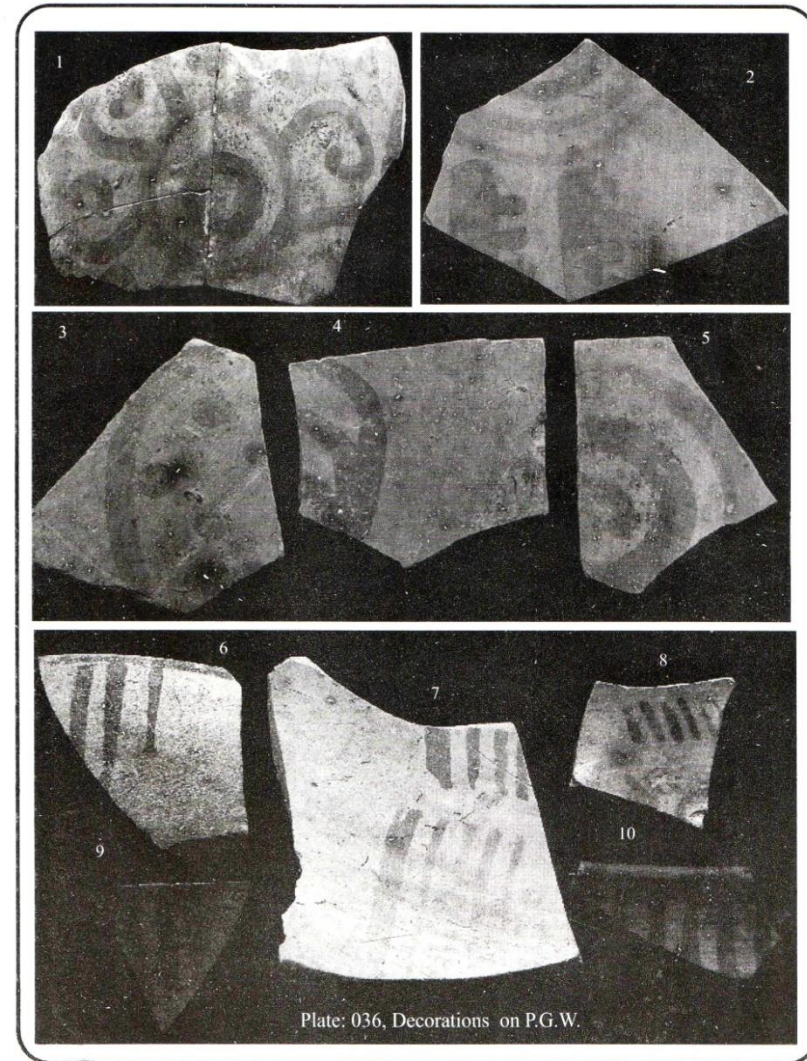
Ahar

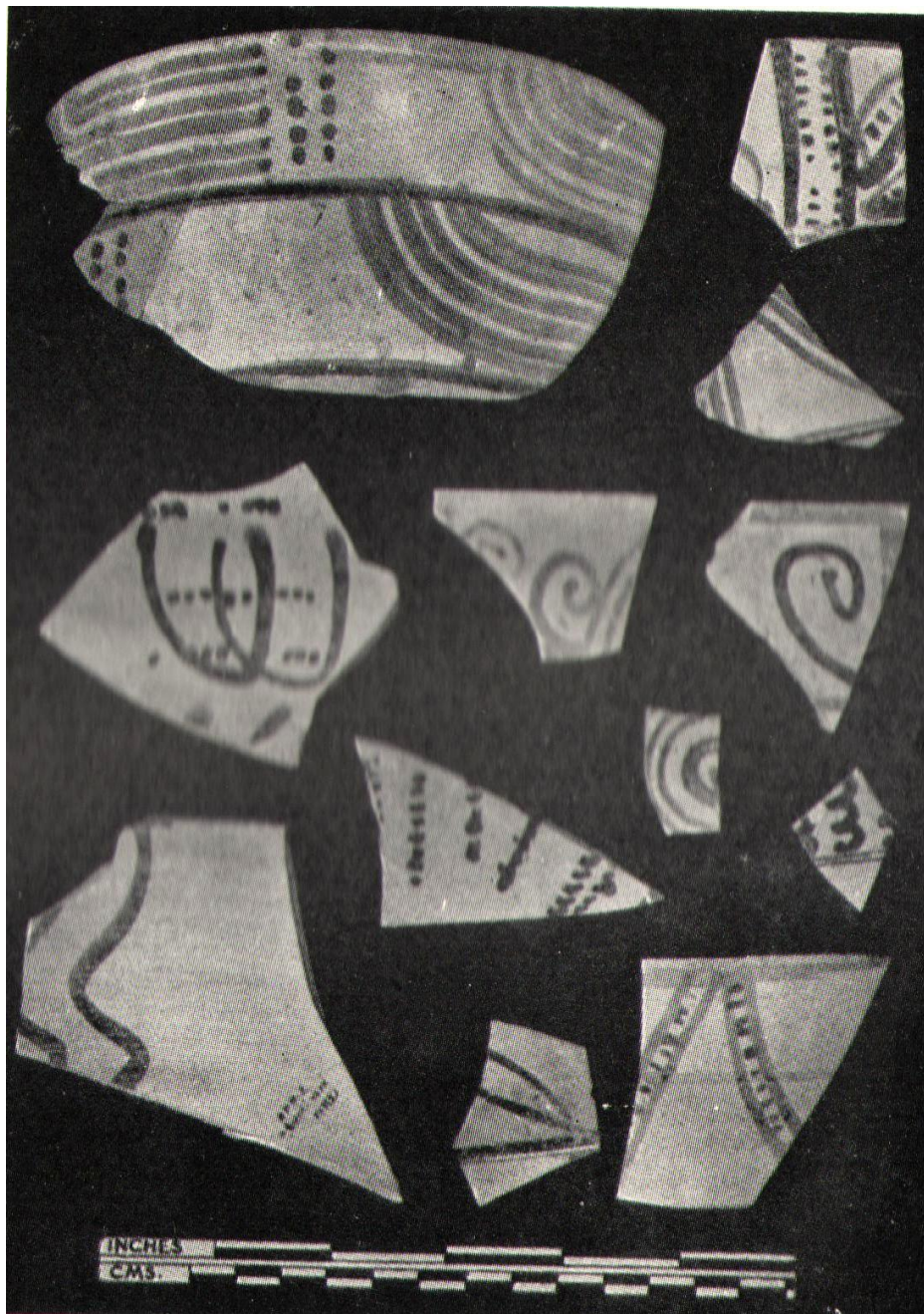


Black-and-red ware



OCP Copper Hoard PGW



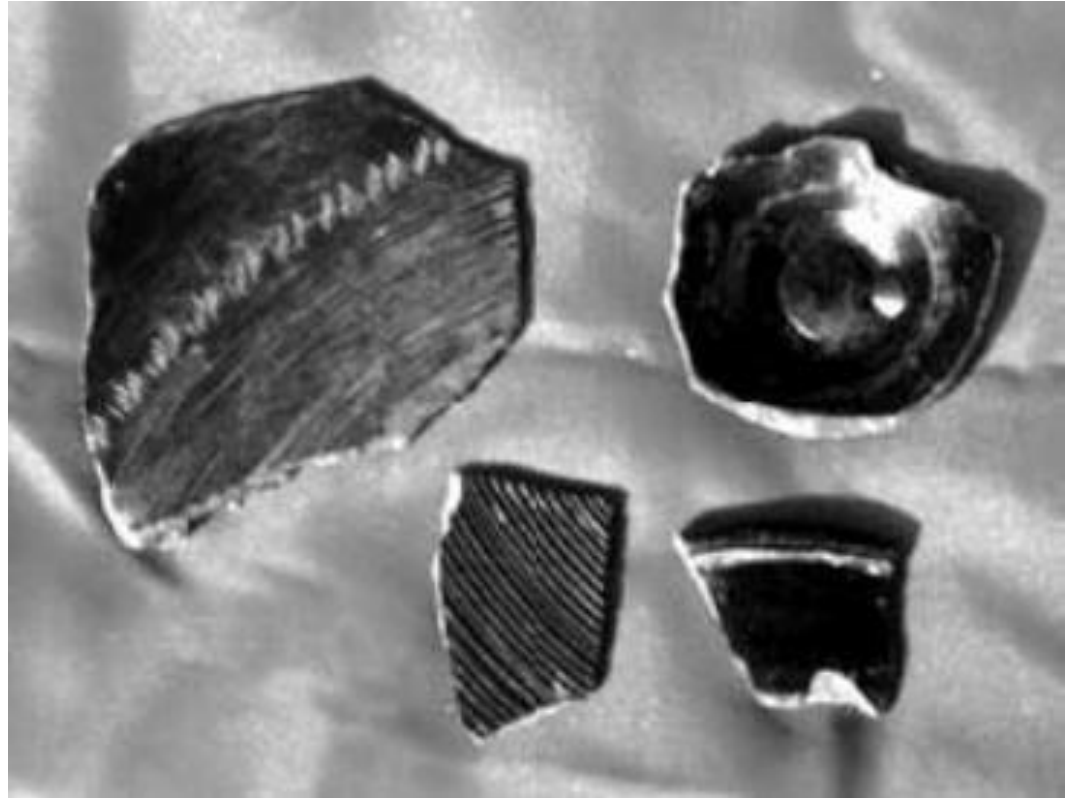


NBPW

a. Early Phase

b. Middle Phase

c. Late Phase (Mauryan)



TC Ringwells







Sunga Period

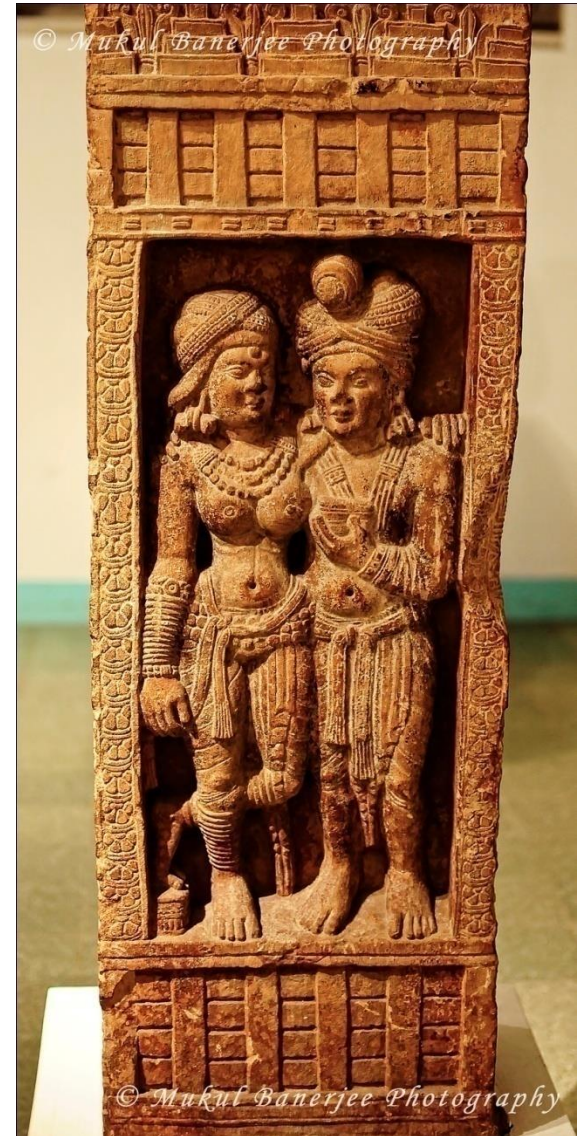
Royal Family



Kuber (Ivory)



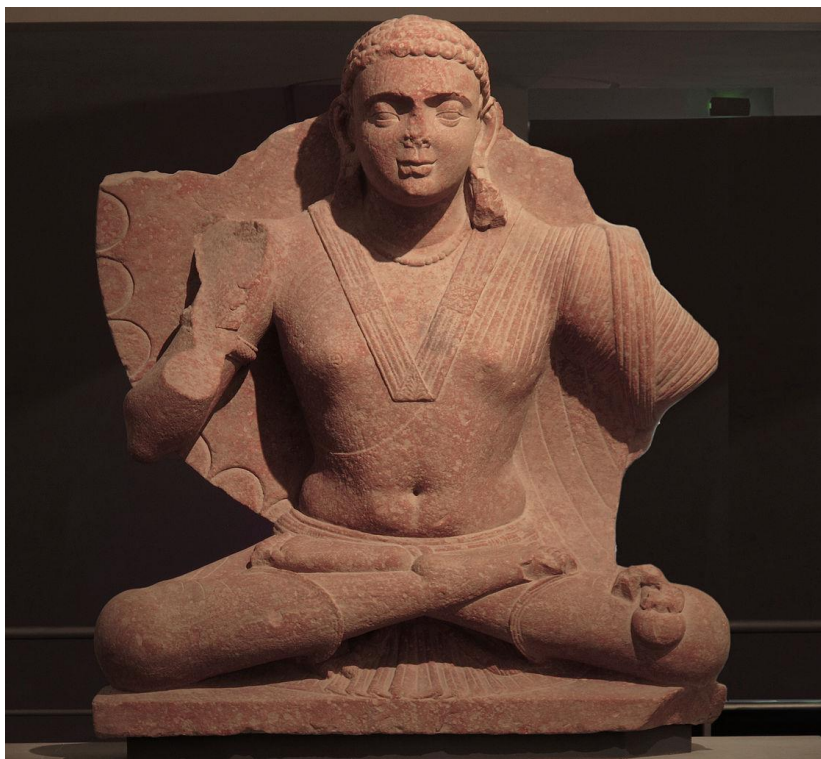




Kushana period



Maitreya

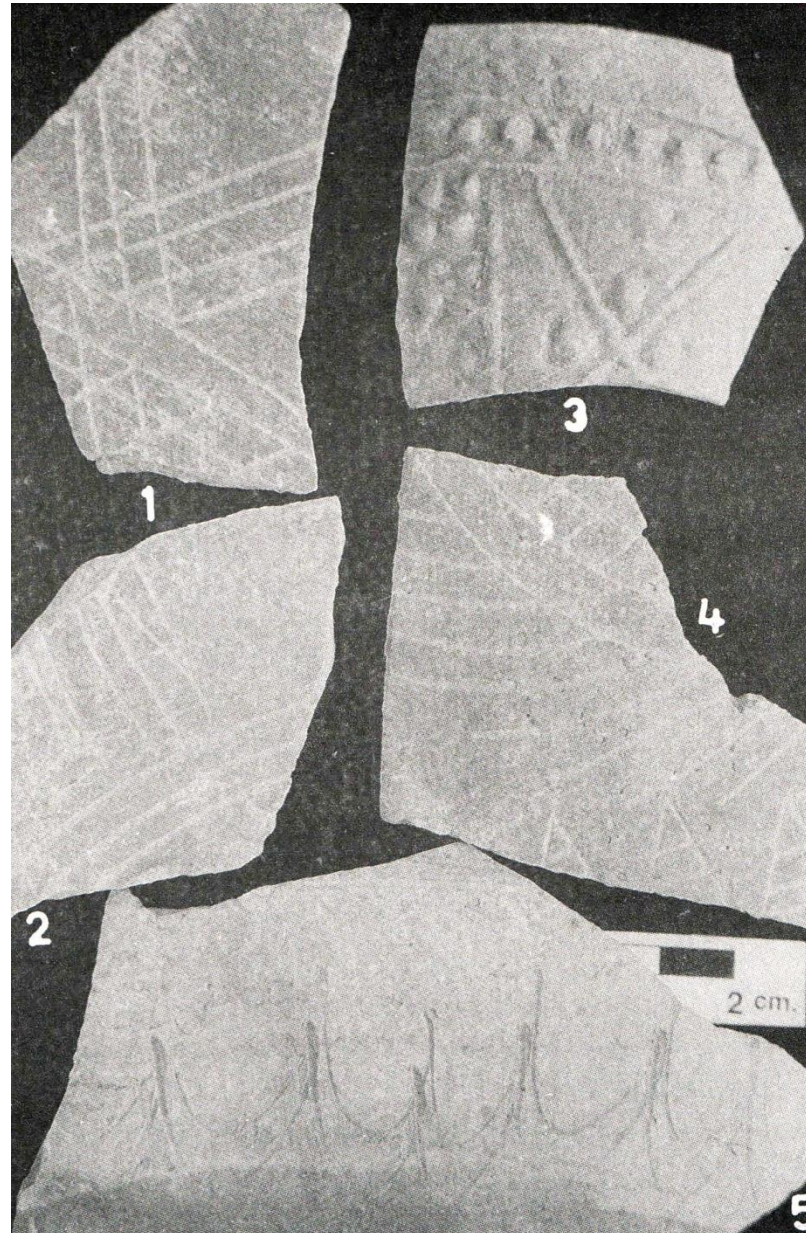


Bodhisattva





Gupta Period





Early Medieval Period

Post Gupta Period

Rajput Period

Pratihara Period

Chandella Period

Parmar Period

Pala Dynasty

Kalachuri Period

Rastrakuta Period

(RW, Glazed Ware, Bowls with nail headed rim)

(Architectural Features)

Medieval Period

Late Medieval Period

or

Nawabi Period

Colonial Period

(RW and Glazed ware)

(Baked Bricks and Lakhauri Bricks)









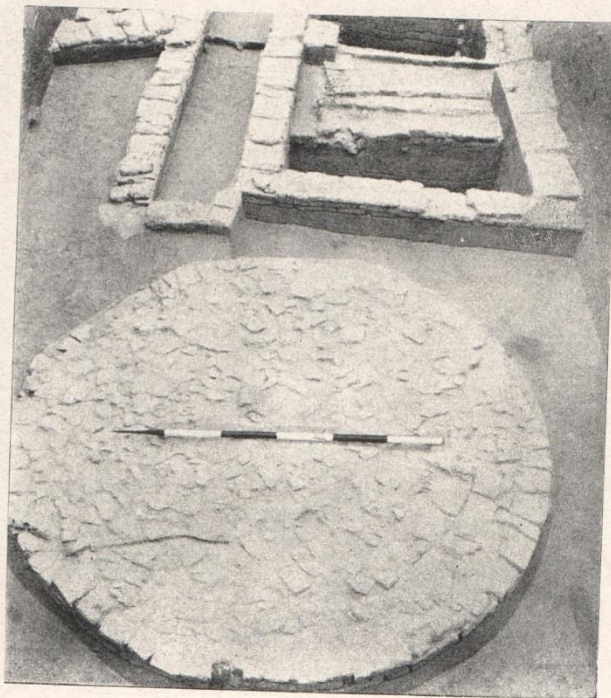
Ahichchhatra

A





A

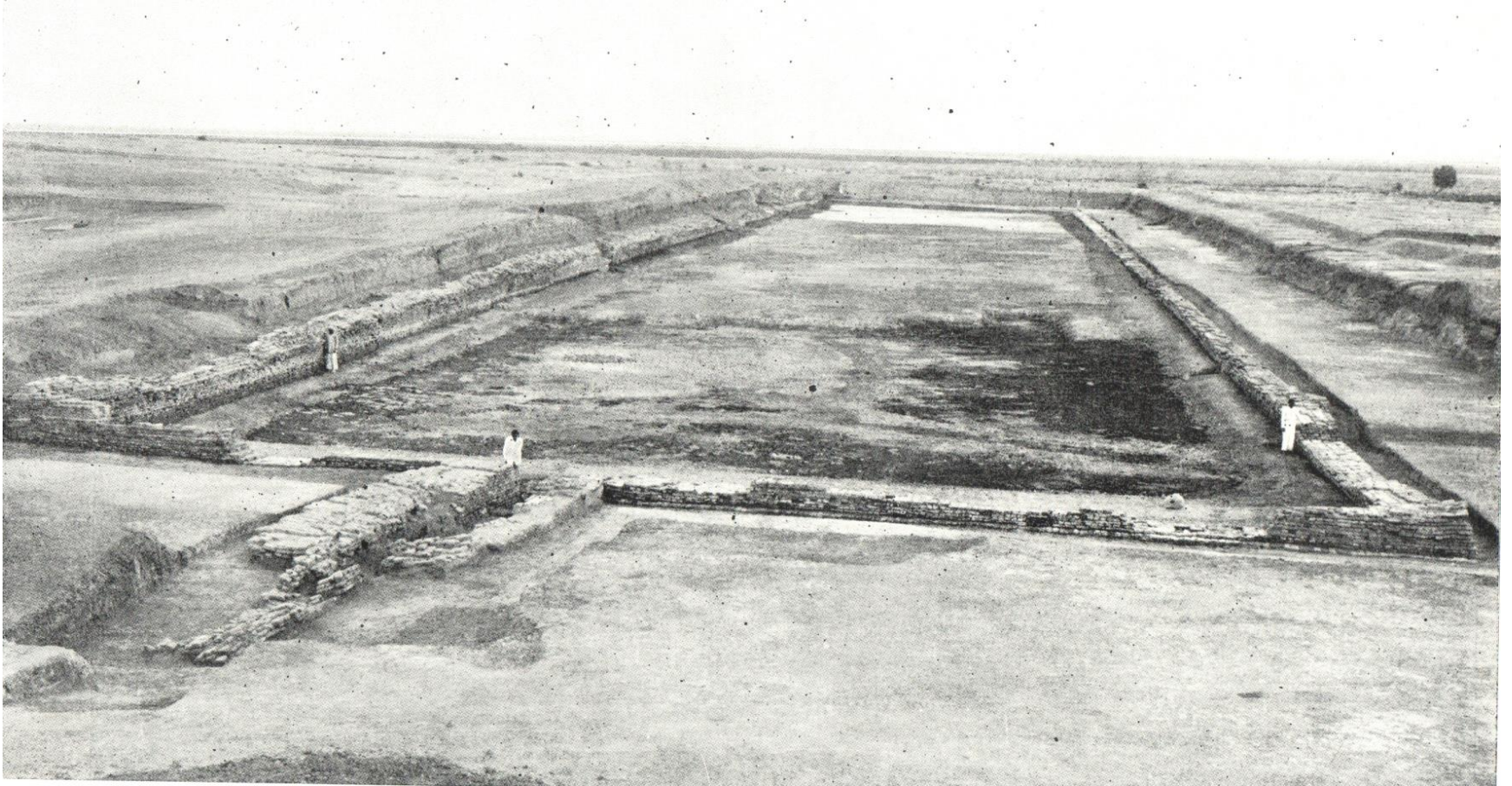


B

Kumrahar: A, wooden platform in the palace-area, and B, circular brick platform and other structures in the monastery-area. See page 19

Lothal

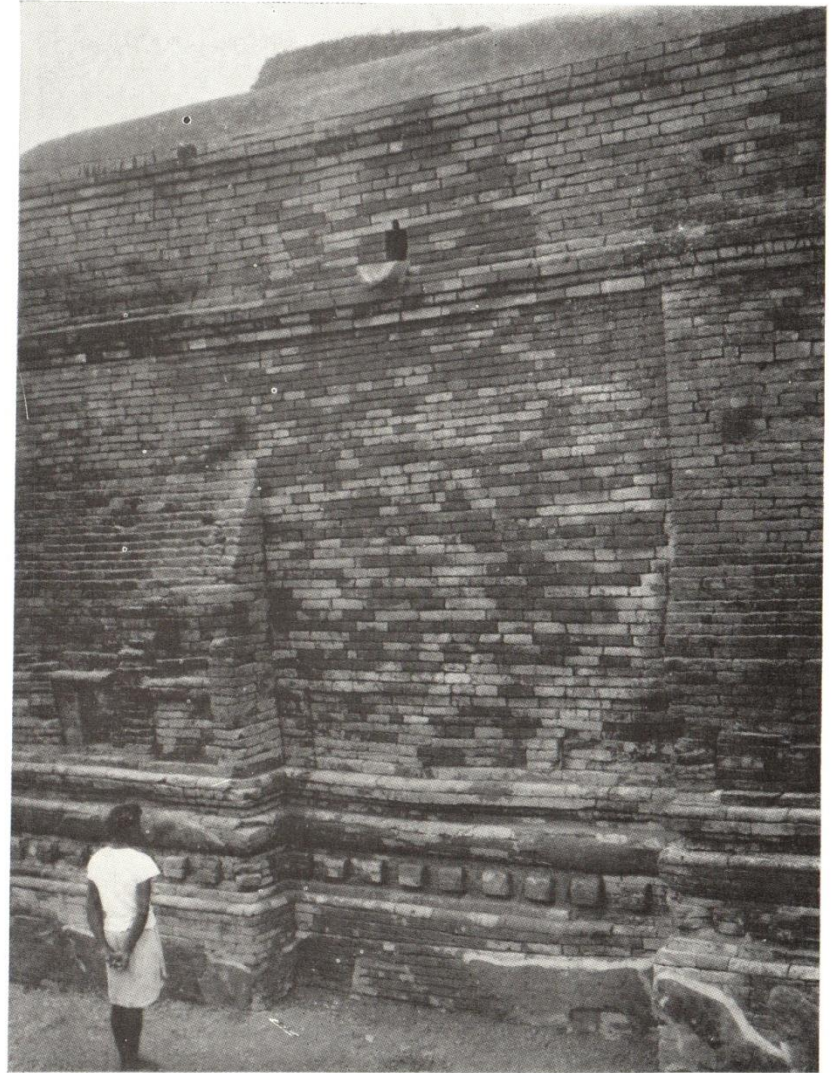
218x37x4



Nalanda



A



B



Thank You